

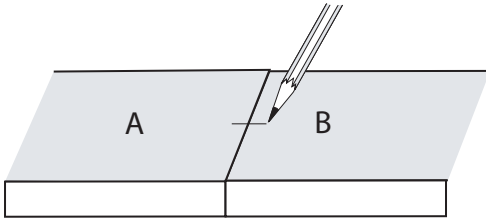
INSTRUCTIONS

Using JIG for MITRE Joints

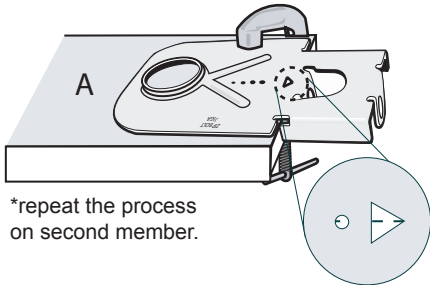


NOW USING ZIPBOLTS IS EVEN EASIER

1 MARK THE LINE ACROSS BOTH MEMBERS.

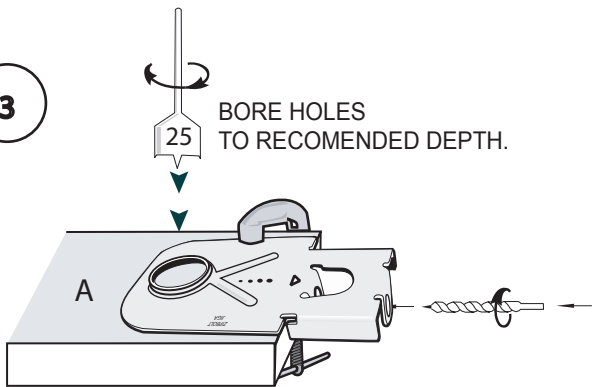


2 CENTRE THE DRAWN LINE TO THE POINT OF THE TRIANGLE AND THEN CLAMP THE JIG.



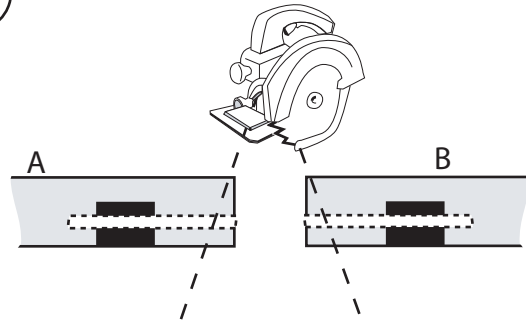
*repeat the process on second member.

3 BORE HOLES TO RECOMENDED DEPTH.

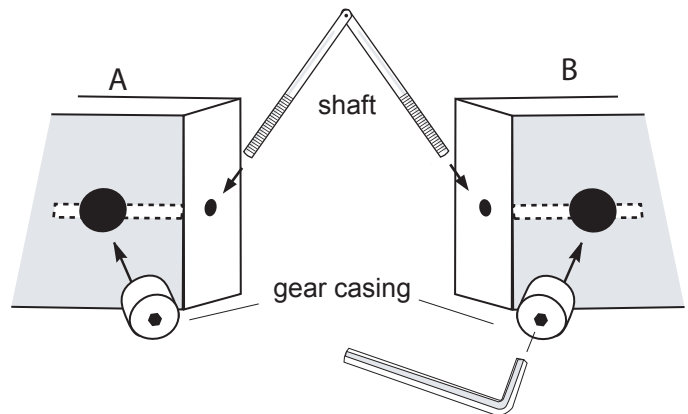


*repeat the process on second member.

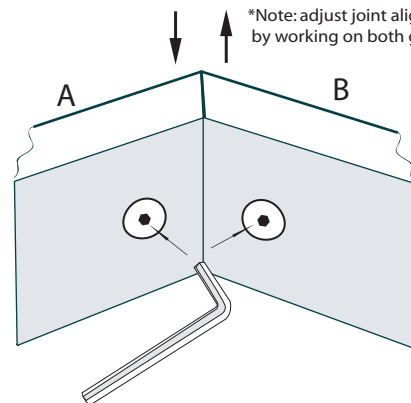
4 CUT REQUIRED ANGLE ON BOTH MEMBERS.



5 INSERT GEAR CASING INTO HOLES AND ENGAGE THE SHAFT.



6 *Note: adjust joint alignment by working on both gears.



TIGHTEN WITH ALLEN KEY OR HEX SHAFT.

JIG A code: 40-200
suites models:
KD-MAXI, KD-MIDI
BORING SPECIFICATIONS:
35mm drill bit
7mm drill bit
JIG B code: 40-210
suites models:
MIDI-MITRE, HALF-MITRE, ST-MAXI, ST-MIDI
BORING SPECIFICATIONS
25mm drill bit
7mm drill bit
JIG C code: 40-220
suites models:
MINI-MITRE, KD-MINI
BORING SPECIFICATIONS
25mm drill bit
6mm drill bit